

Key Investor Information

This document provides you with key investor information about this fund. It is not marketing material. The information is required by law to help you understand the nature and the risks of investing in this fund. You are advised to read it so you can make an informed decision about whether to invest.

SVS Cornelian Cautious Fund Accumulation Class E [ISIN: GB00B06H8R77] Income Class E [ISIN: GB00B06H8T91]

The Fund is a sub-fund of SVS Cornelian Investment Funds.
The Authorised Corporate Director of the Fund is Smith & Williamson Fund Administration Limited trading as St Vincent St Fund Administration, part of the Smith & Williamson group.

Objectives and investment policy

The Fund aims to achieve long term capital growth and income delivering average annual investment returns (total returns, net of fees) of at least RPI + 1.5% over a five to seven year investment cycle. The Fund will have a diversified portfolio.

The Fund will invest directly or indirectly in:

- shares
- bonds issued by governments and other organisations

The Fund may also invest in:

- other investment funds
- other transferable securities (which may include but are not limited to warrants)
- cash, deposits and money market instruments

There is no specific limit in exposure to any sector or geographic area.

The Fund is managed within Cornelian risk level B on a scale of A to E (with A being the lowest risk and E being the highest risk) and below an upper expected volatility limit, the latest details are available at <https://www.cornelianam.com/about-us/svs-cornelian-funds/>.

Details of the methodology used and details on which risk level is most suitable for investors are also available in Appendix VI of the prospectus.

To assist Cornelian with managing the different risk levels, Cornelian utilises data from an external provider to calculate expected volatility limits.

The Fund may use derivatives for Efficient Portfolio Management (EPM), i.e. to protect against market or currency movements, to reduce costs, or to earn income or capital.

Accumulation Shares: Any income the Fund generates will be reinvested. Income Shares: Any income the Fund generates will be paid out to you.

You can buy and sell shares from Monday to Friday where these days are business days.

Recommendation: this Fund may not be appropriate for investors who plan to withdraw their money within 5 years.

The Fund is actively managed, which means that the manager has discretion over the composition of its portfolio, and the Fund is not tracking the benchmark nor is the Fund constrained by the value, price or components of that benchmark or any other aspect. The benchmark is a target for the Fund, where the target return of the Fund aims to match or exceed the return of that benchmark.

For full investment objectives and policy details please refer to the prospectus.

Risk and reward profile

The Risk and Reward Indicator table demonstrates where the Fund ranks in terms of its potential risk and reward. The higher the rank the greater the potential reward but the greater the risk of losing money. It is based on past data, may change over time and may not be a reliable indication of the future risk profile of the Fund. The shaded area in the table below shows the Fund's ranking on the Risk and Reward Indicator.

Typically lower rewards,
lower risk

Typically higher rewards,
higher risk



- The Fund is in a medium category because the price of its investments have risen or fallen to some extent. The category shown is not guaranteed to remain unchanged and may shift over time. Even the lowest category does not mean a risk-free investment.
- The price of the Fund and any income from it can go down as well as up and is not guaranteed. Investors may not get back the amount invested. Past performance is not a guide to future performance.
- Exposure to the risks associated with property investment, include but are not limited to, fluctuations in land prices, construction costs, interest rates, inflation and property yields, changes in taxation, legislation changes in landlord and tenant legislation, environmental factors, and changes in the supply and demand for property.
- Where the Fund invests in bonds, there is a risk the bond issuer may fail to meet its repayments. This is usually a greater risk for bonds that produce a higher level of income. Changes in interest rates, inflation and the creditworthiness of the bond issuer may also affect the bond's market value.
- Where the Fund invests into other investment funds, they may invest in different assets, countries or economic sectors and therefore have different risk profiles not in line with those of the Fund.
- Investment trusts and closed ended funds may borrow to purchase additional investments. This can increase returns when stock markets rise but will magnify losses when markets fall.
- The value of an investment trust or a closed-ended fund moves in line with stock market demand and its share price may be less than or more than the net value of the investments it holds.
- The Fund is entitled to use derivative instruments for EPM. Derivatives may not achieve their intended purpose. Their prices may move up or down significantly over relatively short periods of time which may result in losses greater than the amount paid. This could adversely impact the value of the Fund.
- The organisation from which the Fund buys a derivative may fail to carry out its obligations, which could also cause losses to the Fund.
- For full details on risk factors for this Fund, please refer to the prospectus.

Charges

The charges you pay are used to pay the costs of running the Fund, including the costs of marketing and distributing it. These charges reduce the potential growth of your investment.

One-off charges taken before or after you invest

Entry charge	0.00%
Exit charge	0.00%

These are the maximum charges that we might take out of your money before it is invested and before we pay out the sale proceeds of your investment. In some cases, you might pay less and you should speak to your financial adviser about this.

Charges taken from the Fund over a year

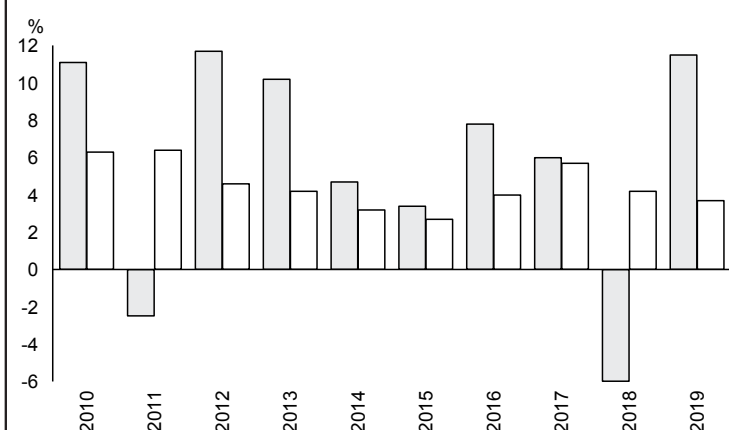
Ongoing charges	1.66%
-----------------	-------

Charges taken from the Fund under specific conditions

Performance fee	NONE
-----------------	------

- The ongoing charges figure is estimated as from 01/03/2020 the research costs are no longer paid by the Fund. As such the previous ongoing charges calculation no longer offers a reliable indication of the charges that the Fund is exposed to. The ongoing charges figure may vary from year to year and will exclude the costs of buying or selling assets for the Fund (unless these assets are shares of another fund).
- A dilution levy may be charged on a purchase or sale of shares in the Fund in some cases. It may be necessary to reduce the difference between the cost of buying or selling the Fund's investments and the Fund's mid-market share price. Any dilution levy charged will be paid into the Fund.
- The Fund's annual report for each financial year will include detail on the exact charges made.
- For further information about charges, please refer to relevant sections in the Fund's prospectus.

Past performance



	2010	2011	2012	2013	2014	2015	2016	2017	2018	2019
Fund	11.1	-2.5	11.7	10.2	4.7	3.4	7.8	6.0	-6.0	11.5
Index*	6.3	6.4	4.6	4.2	3.2	2.7	4.0	5.7	4.2	3.7

Source: FE fundinfo 2020

- You should be aware that past performance is not a guide to future performance.
- Fund launch date: 11/04/2005.
- Share/unit class launch date: 11/04/2005.
- Performance is calculated in GBP.
- In order to provide additional clarity to investors on the objective, on 14/02/2017 the Fund's objective and investment policy were expanded to include guidance to investors on the Fund's risk level and the RPI+ performance targets level and also to clarify the usage of derivatives for EPM. This had no impact on the investment strategy of the Fund.
- All charges and fees, except any entry, exit or switching charges, have been included within the performance calculation.
- This benchmark is a target for the Fund, and the Fund is not tracking the benchmark nor is constrained by it.
- * UK Retail Price Index + 1.5%

Practical information

- The Depositary of the Fund is NatWest Trustee & Depositary Services Limited.
- You can get further information on the Fund, including how to buy and sell shares, from the prospectus and the latest annual and half-yearly reports and accounts, which are in English only. You can get copies of these free of charge, by telephoning 0141 222 1151.
- The latest share prices are available on www.fundlistings.com or by telephoning 0141 222 1151.
- UK tax laws may impact your own tax position.
- Smith & Williamson Fund Administration Limited may be held liable solely on the basis of any statement contained in this document that is misleading, inaccurate or inconsistent with the relevant parts of the prospectus for the UCITS.
- The Fund is a sub-fund of a UCITS umbrella company. The prospectus and long report are prepared for the entire entity. The liabilities of each sub-fund are segregated by UK law and the Fund should not be liable for any debts that cannot be paid by another sub-fund.
- There are other share classes available in this Fund, and other funds in the umbrella. You can convert between share classes and switch to a different fund by writing to Transfer Agency, 206 St Vincent Street, Glasgow G2 5SG.
- Details of the Smith & Williamson Fund Administration Limited remuneration policy are available on <http://smithandwilliamson.com/footer-pages/remuneration-code-disclosure> and a copy will be made available free of charge on request.

The Fund is authorised in the UK and regulated by the Financial Conduct Authority.

Smith & Williamson Fund Administration Limited is authorised in the UK and regulated by the Financial Conduct Authority.

This Key Investor Information is accurate as at 15/05/2020.